

The background is a deep blue with a wavy, liquid-like texture. Two thin white vertical lines are positioned symmetrically on either side of the central text. The text 'Floor Plans' is centered in a white, serif font.

Floor Plans



Exquisite Elegance

Trillionaire Residences exude elegance and sophistication in every detail, from the tastefully designed interiors to the premium finishes throughout the property.



Studio

TYPE 1



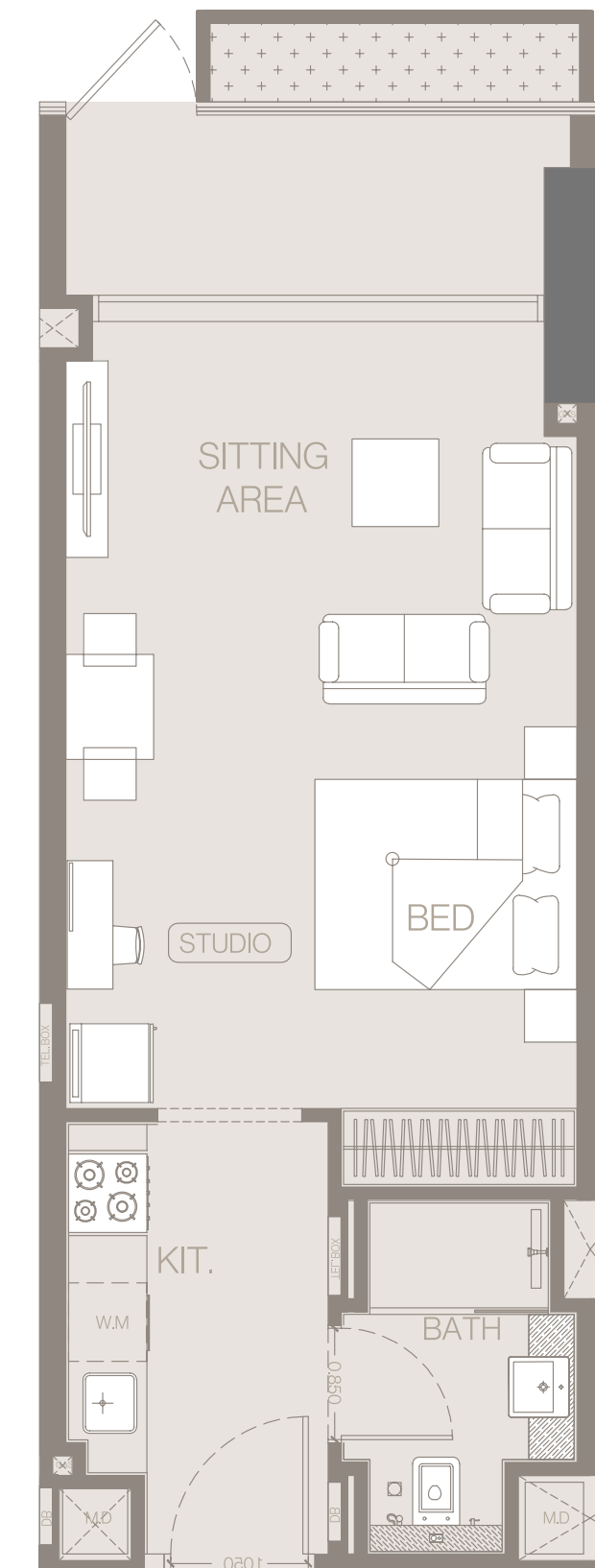
1ST FLOOR PLAN

FLAT NO.: 19

AREA	SQ.M.	SQ.FT.
Suite Area	39.36 m ²	423.67 ft ²
Balcony Area	5.87 m ²	63.18 ft ²
Total Unit Area	45.23 m ²	486.85 ft ²

FLAT DESIGN COMPONENTS

Bath	4 m ²
Bedroom & Living	25 m ²
Kitchen	6 m ²



Disclaimer: 1. All stated dimensions and services whether in relation to the building, common areas or individual units are subject to government and local authority approvals. Final dimensions and services will be stated in your sales and purchase agreement 2. All room dimensions are measured to structural elements and exclude wall finishes and construction tolerances. 3. All dimensions have been provided by our consultant architects. 4. All materials, dimensions and drawings are approximate. Information is subject to change without notice. 5. Actual suite area may vary from the stated area. Drawings are not to scale. The Developer reserves the right to make any revisions whatsoever including for aesthetic purposes. 6. Calculation of suite area is measured as the area bounded by the centre line of demising or partition walls separating one unit from another unit, the exterior face of all exterior walls, and the exterior face of the corridor wall enclosing the adjoining unit. 7. Calculation of balcony area is measured as the area bounded by the centre line of demising or partition walls separating one unit from another unit, the outmost face of the enclosing guard and the external face of the adjoining balcony. 8. The units are measured at typical floor in the building. Columns may vary in size depending on the floor level. 9. For each unit type, unit sizes and details might be different and your sales and purchase agreement will contain the actual size of each specific unit.

Studio

TYPE 2



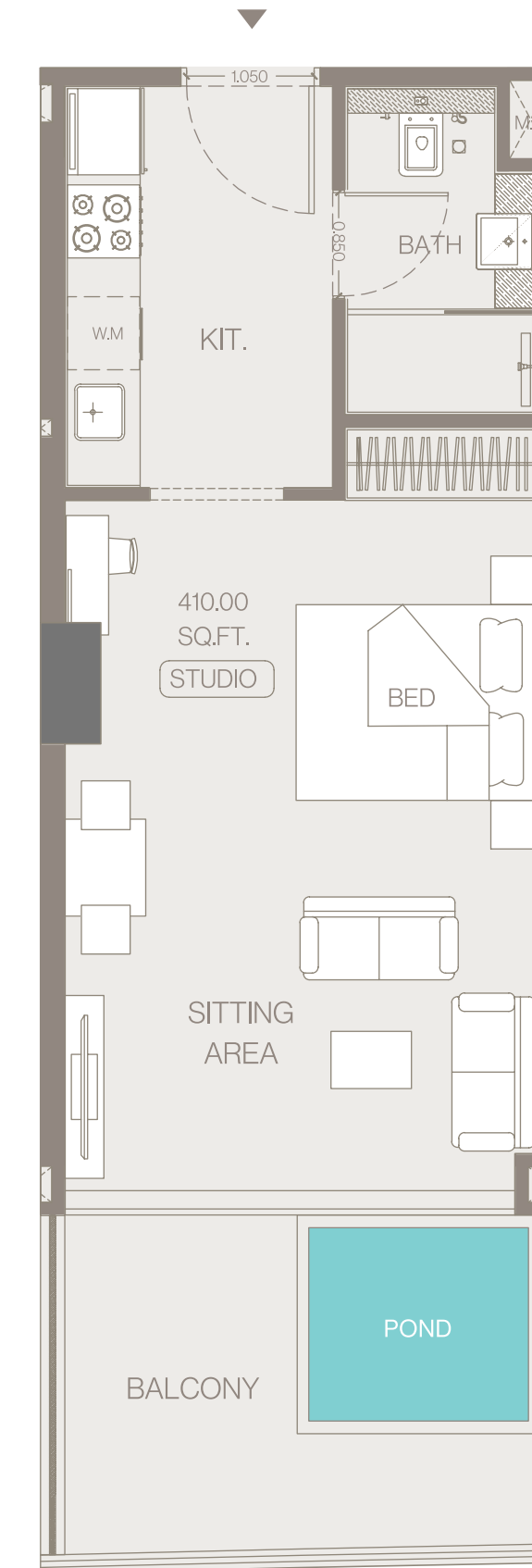
1ST - 9TH FLOOR PLAN

FLAT NO.: 15 LEVEL 1 / 21 LEVEL 2-9

AREA	SQ.M.	SQ.FT.
Suite Area	37.62 m ²	404.94 ft ²
Balcony Area	11.65 m ²	125.40 ft ²
Total Unit Area	49.27 m ²	530.34 ft ²

FLAT DESIGN COMPONENTS

Bath	4 m ²
Bedroom & Living	23 m ²
Kitchen	7 m ²



Disclaimer: 1. All stated dimensions and services whether in relation to the building, common areas or individual units are subject to government and local authority approvals. Final dimensions and services will be stated in your sales and purchase agreement 2. All room dimensions are measured to structural elements and exclude wall finishes and construction tolerances. 3. All dimensions have been provided by our consultant architects. 4. All materials, dimensions and drawings are approximate. Information is subject to change without notice. 5. Actual suite area may vary from the stated area. Drawings are not to scale. The Developer reserves the right to make any revisions whatsoever including for aesthetic purposes. 6. Calculation of suite area is measured as the area bounded by the centre line of demising or partition walls separating one unit from another unit, the exterior face of all exterior walls, and the exterior face of the corridor wall enclosing the adjoining unit. 7. Calculation of balcony area is measured as the area bounded by the centre line of demising or partition walls separating one unit from another unit, the outmost face of the enclosing guard and the external face of the adjoining balcony. 8. The units are measured at typical floor in the building. Columns may vary in size depending on the floor level. 9. For each unit type, unit sizes and details might be different and your sales and purchase agreement will contain the actual size of each specific unit.

Studio

TYPE 3

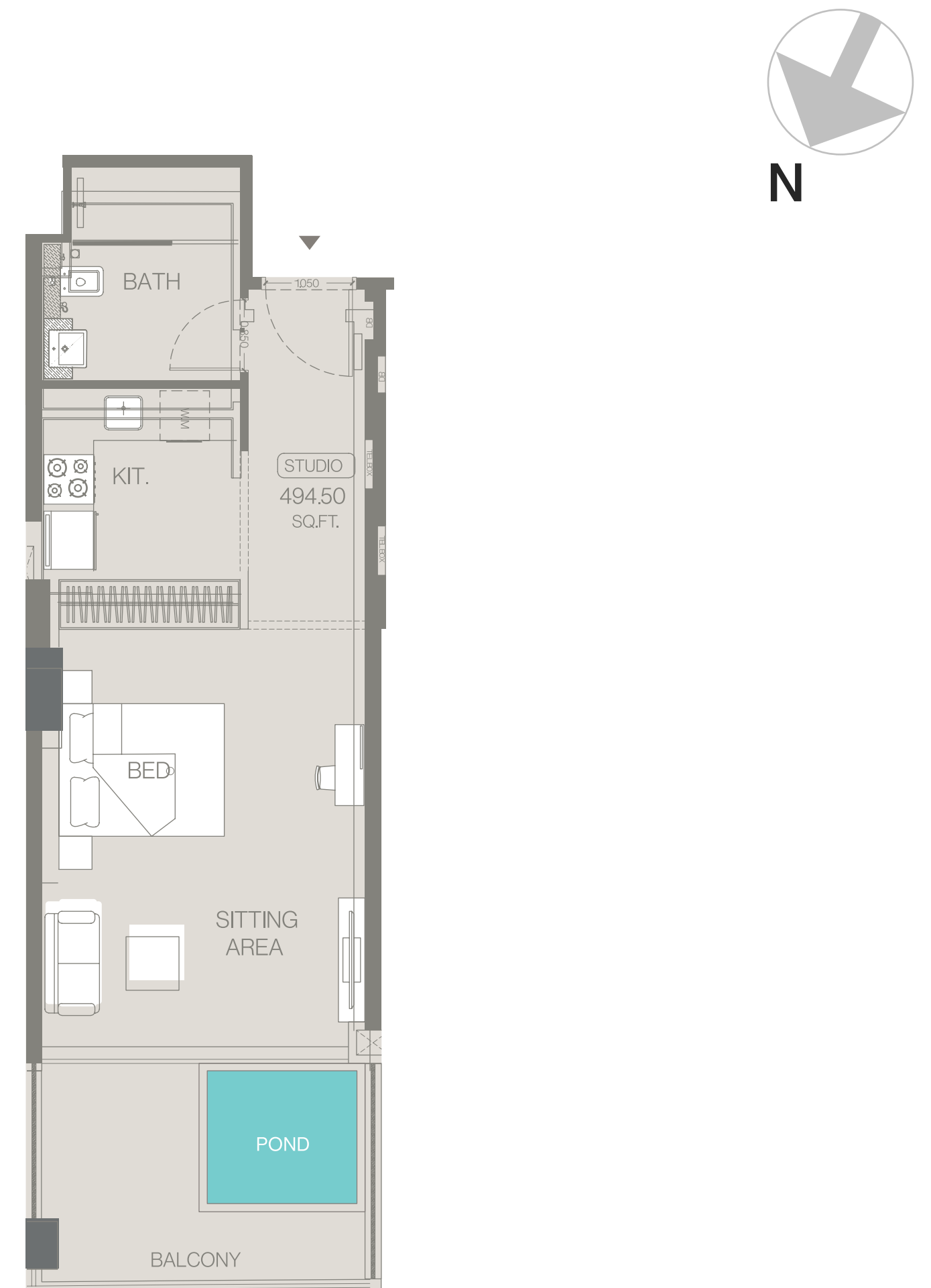
1ST - 9TH FLOOR PLAN

FLAT NO.: 8 LEVEL 1 / 12 LEVEL 2-9

AREA	SQ.M.	SQ.FT.
Suite Area	42.03 m ²	452.41 ft ²
Balcony Area	11.15 m ²	120.02 ft ²
Total Unit Area	53.18 m ²	572.42 ft ²

FLAT DESIGN COMPONENTS

Bath	6 m ²
Bedroom & Living	21 m ²
Kitchen	5 m ²
Corridor	6 m ²



Disclaimer: 1. All stated dimensions and services whether in relation to the building, common areas or individual units are subject to government and local authority approvals. Final dimensions and services will be stated in your sales and purchase agreement 2. All room dimensions are measured to structural elements and exclude wall finishes and construction tolerances. 3. All dimensions have been provided by our consultant architects. 4. All materials, dimensions and drawings are approximate. Information is subject to change without notice. 5. Actual suite area may vary from the stated area. Drawings are not to scale. The Developer reserves the right to make any revisions whatsoever including for aesthetic purposes. 6. Calculation of suite area is measured as the area bounded by the centre line of demising or partition walls separating one unit from another unit, the exterior face of all exterior walls, and the exterior face of the corridor wall enclosing the adjoining unit. 7. Calculation of balcony area is measured as the area bounded by the centre line of demising or partition walls separating one unit from another unit, the outmost face of the enclosing guard and the external face of the adjoining balcony. 8. The units are measured at typical floor in the building. Columns may vary in size depending on the floor level. 9. For each unit type, unit sizes and details might be different and your sales and purchase agreement will contain the actual size of each specific unit.

Studio

TYPE 4

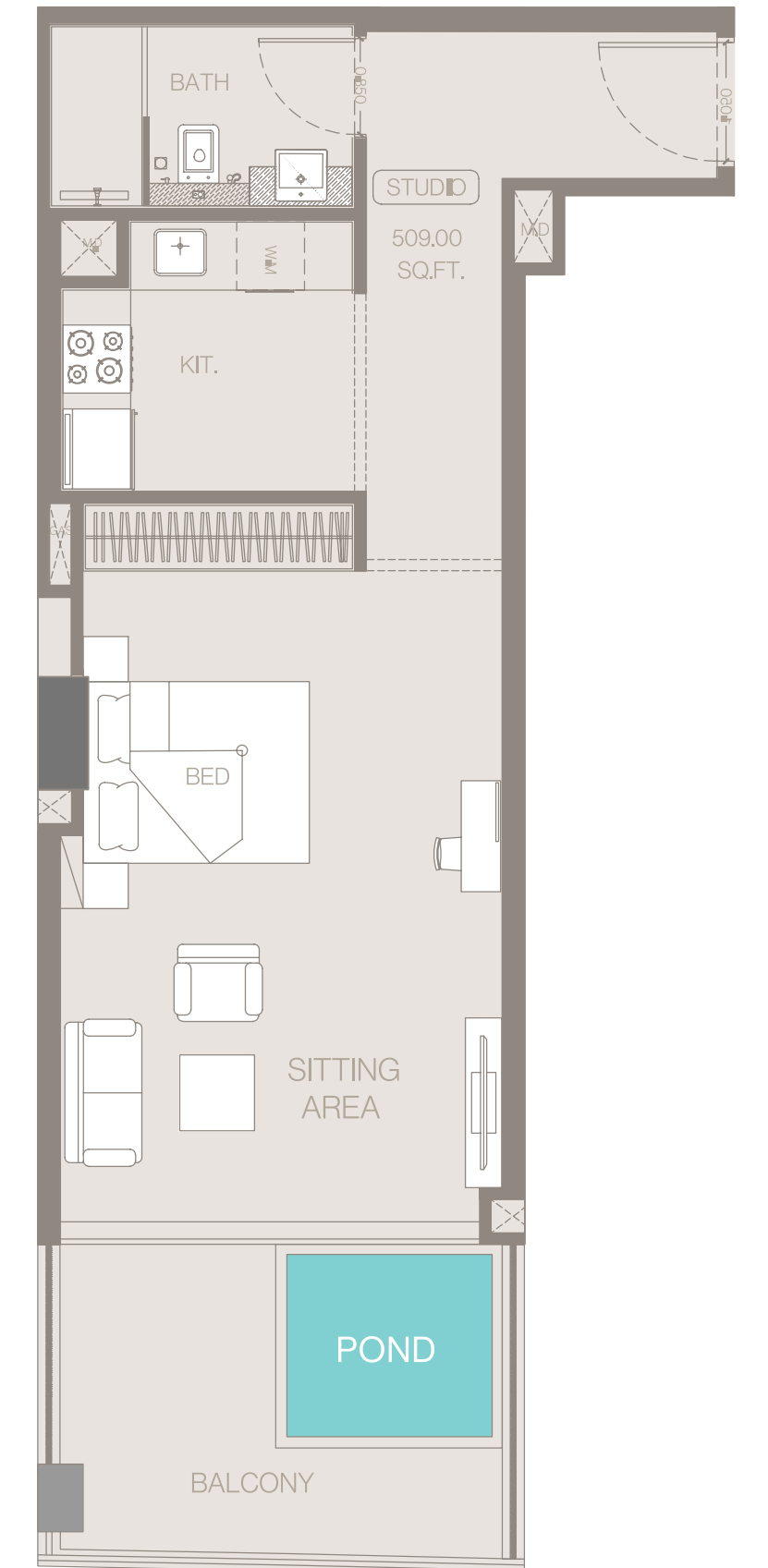
1ST - 9TH FLOOR PLAN

FLAT NO.: 6 LEVEL 1 / 11 LEVEL 2-9

AREA	SQ.M.	SQ.FT.
Suite Area	46.78 m ²	503.54 ft ²
Balcony Area	11.61 m ²	124.97 ft ²
Total Unit Area	58.39 m ²	628.50 ft ²

FLAT DESIGN COMPONENTS

Bath	4 m ²
Bedroom & Living	23 m ²
Kitchen	6 m ²
Corridor	8 m ²



Disclaimer: 1. All stated dimensions and services whether in relation to the building, common areas or individual units are subject to government and local authority approvals. Final dimensions and services will be stated in your sales and purchase agreement 2. All room dimensions are measured to structural elements and exclude wall finishes and construction tolerances. 3. All dimensions have been provided by our consultant architects. 4. All materials, dimensions and drawings are approximate. Information is subject to change without notice. 5. Actual suite area may vary from the stated area. Drawings are not to scale. The Developer reserves the right to make any revisions whatsoever including for aesthetic purposes. 6. Calculation of suite area is measured as the area bounded by the centre line of demising or partition walls separating one unit from another unit, the exterior face of all exterior walls, and the exterior face of the corridor wall enclosing the adjoining unit. 7. Calculation of balcony area is measured as the area bounded by the centre line of demising or partition walls separating one unit from another unit, the outmost face of the enclosing guard and the external face of the adjoining balcony. 8. The units are measured at typical floor in the building. Columns may vary in size depending on the floor level. 9. For each unit type, unit sizes and details might be different and your sales and purchase agreement will contain the actual size of each specific unit.

Studio

TYPE 5

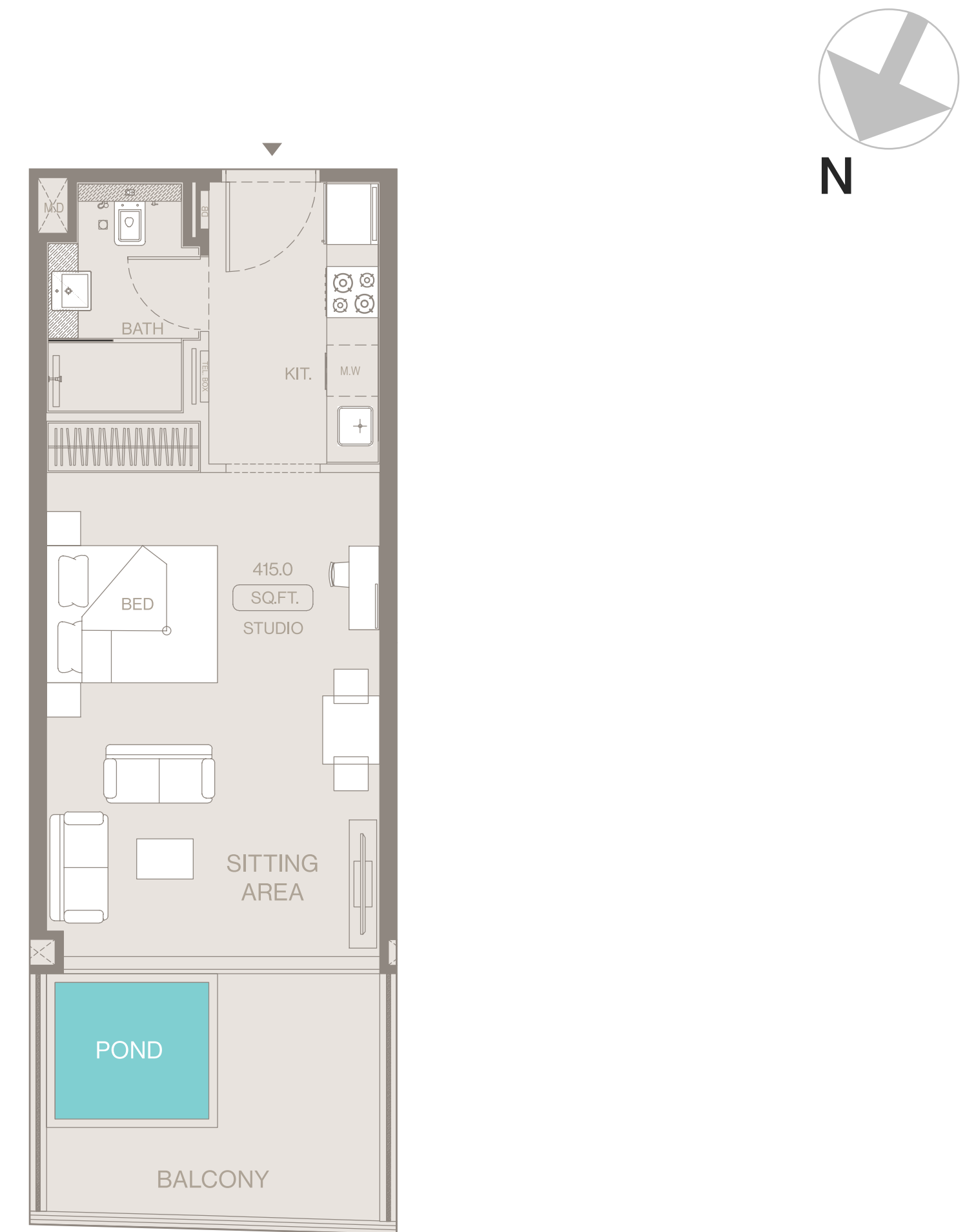
1ST - 9TH FLOOR PLAN

FLAT NO.: 5 LEVEL 1 / 10 LEVEL 2-9

AREA	SQ.M.	SQ.FT.
Suite Area	37.70 m ²	405.80 ft ²
Balcony Area	12.03 m ²	129.49 ft ²
Total Unit Area	49.73 m ²	535.29 ft ²

FLAT DESIGN COMPONENTS

Bath	4 m ²
Bedroom & Living	24 m ²
Kitchen	7 m ²



Disclaimer: 1. All stated dimensions and services whether in relation to the building, common areas or individual units are subject to government and local authority approvals. Final dimensions and services will be stated in your sales and purchase agreement 2. All room dimensions are measured to structural elements and exclude wall finishes and construction tolerances. 3. All dimensions have been provided by our consultant architects. 4. All materials, dimensions and drawings are approximate. Information is subject to change without notice. 5. Actual suite area may vary from the stated area. Drawings are not to scale. The Developer reserves the right to make any revisions whatsoever including for aesthetic purposes. 6. Calculation of suite area is measured as the area bounded by the centre line of demising or partition walls separating one unit from another unit, the exterior face of all exterior walls, and the exterior face of the corridor wall enclosing the adjoining unit. 7. Calculation of balcony area is measured as the area bounded by the centre line of demising or partition walls separating one unit from another unit, the outmost face of the enclosing guard and the external face of the adjoining balcony. 8. The units are measured at typical floor in the building. Columns may vary in size depending on the floor level. 9. For each unit type, unit sizes and details might be different and your sales and purchase agreement will contain the actual size of each specific unit.

Studio

TYPE 6

1ST - 9TH FLOOR PLAN

FLAT NO.: 16 LEVEL 1 / 22 LEVEL 2-9

AREA	SQ.M.	SQ.FT.
Suite Area	45.65 m ²	491.37 ft ²
Balcony Area	11.37 m ²	122.06 ft ²
Total Unit Area	56.99 m ²	613.44 ft ²

FLAT DESIGN COMPONENTS

Bath	4 m ²
Bedroom & Living	23 m ²
Kitchen	5 m ²
Corridor	8 m ²



Disclaimer: 1. All stated dimensions and services whether in relation to the building, common areas or individual units are subject to government and local authority approvals. Final dimensions and services will be stated in your sales and purchase agreement 2. All room dimensions are measured to structural elements and exclude wall finishes and construction tolerances. 3. All dimensions have been provided by our consultant architects. 4. All materials, dimensions and drawings are approximate. Information is subject to change without notice. 5. Actual suite area may vary from the stated area. Drawings are not to scale. The Developer reserves the right to make any revisions whatsoever including for aesthetic purposes. 6. Calculation of suite area is measured as the area bounded by the centre line of demising or partition walls separating one unit from another unit, the exterior face of all exterior walls, and the exterior face of the corridor wall enclosing the adjoining unit. 7. Calculation of balcony area is measured as the area bounded by the centre line of demising or partition walls separating one unit from another unit, the outmost face of the enclosing guard and the external face of the adjoining balcony. 8. The units are measured at typical floor in the building. Columns may vary in size depending on the floor level. 9. For each unit type, unit sizes and details might be different and your sales and purchase agreement will contain the actual size of each specific unit.



One Bedroom

TYPE 1



1ST FLOOR PLAN

FLAT NO.: 3

AREA	SQ.M.	SQ.FT.
Suite Area	45.48 m ²	489.54 ft ²
Balcony Area	69.23 m ²	745.19 ft ²
Total Unit Area	114.71 m ²	1234.73 ft ²

FLAT DESIGN COMPONENTS

Bath	4 m ²
Bedroom	13 m ²
Kitchen	6 m ²
Living & Dinning	13 m ²
Passage	4 m ²



Disclaimer: 1. All stated dimensions and services whether in relation to the building, common areas or individual units are subject to government and local authority approvals. Final dimensions and services will be stated in your sales and purchase agreement 2. All room dimensions are measured to structural elements and exclude wall finishes and construction tolerances. 3. All dimensions have been provided by our consultant architects. 4. All materials, dimensions and drawings are approximate. Information is subject to change without notice. 5. Actual suite area may vary from the stated area. Drawings are not to scale. The Developer reserves the right to make any revisions whatsoever including for aesthetic purposes. 6. Calculation of suite area is measured as the area bounded by the centre line of demising or partition walls separating one unit from another unit, the exterior face of all exterior walls, and the exterior face of the corridor wall enclosing the adjoining unit. 7. Calculation of balcony area is measured as the area bounded by the centre line of demising or partition walls separating one unit from another unit, the outmost face of the enclosing guard and the external face of the adjoining balcony. 8. The units are measured at typical floor in the building. Columns may vary in size depending on the floor level. 9. For each unit type, unit sizes and details might be different and your sales and purchase agreement will contain the actual size of each specific unit.

One Bedroom

TYPE 2



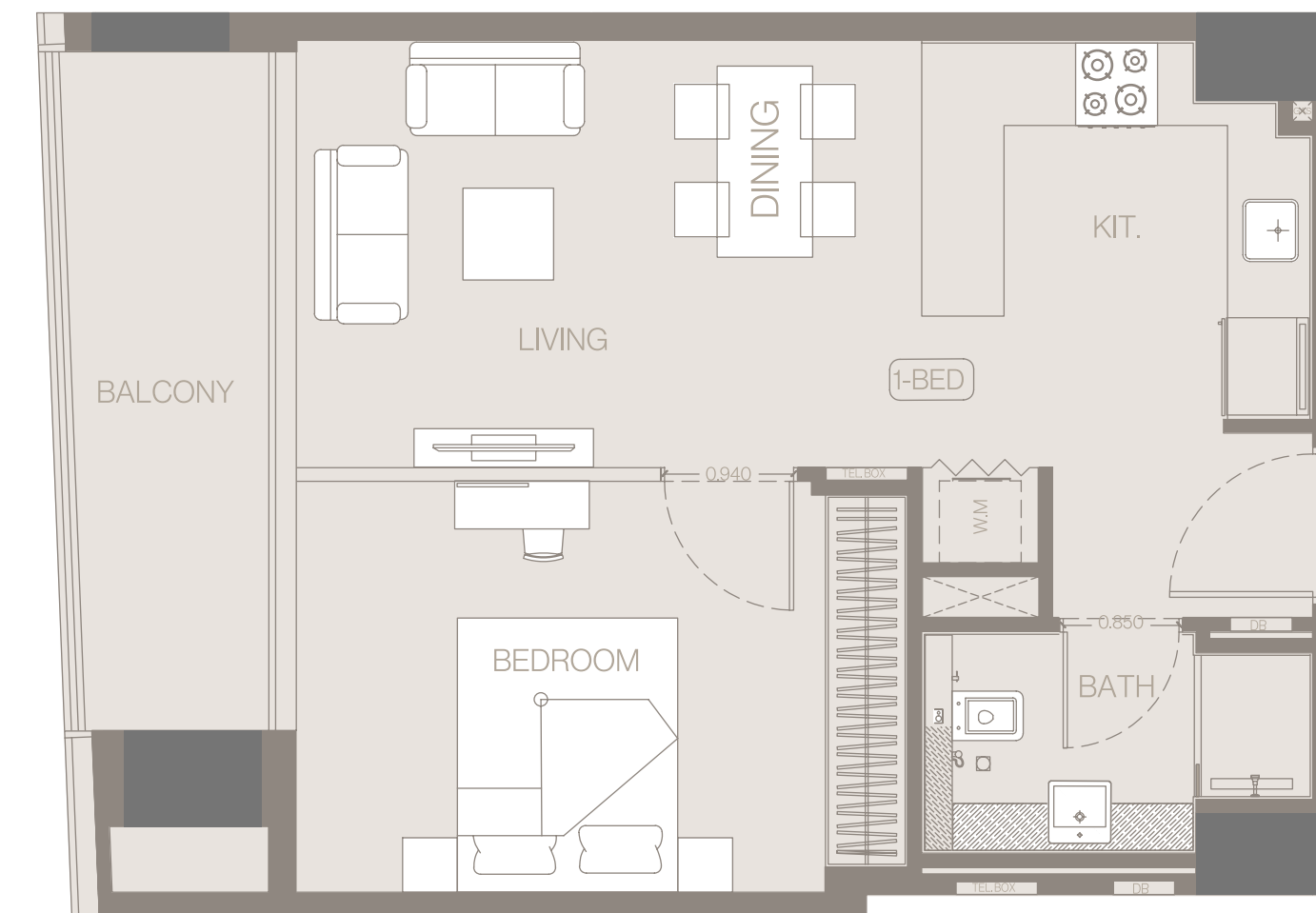
2ND - 19TH FLOOR PLAN

FLAT NO.: 19 LEVEL 2-9 / 16 LEVEL 10-19

AREA	SQ.M.	SQ.FT.
Suite Area	47.34 m ²	509.56 ft ²
Balcony Area	8.57 m ²	92.25 ft ²
Total Unit Area	55.91 m ²	601.81 ft ²

FLAT DESIGN COMPONENTS

Bath	4 m ²
Bedroom	13 m ²
Kitchen	8 m ²
Living & Dinning	14 m ²
Passage	3 m ²



Disclaimer: 1. All stated dimensions and services whether in relation to the building, common areas or individual units are subject to government and local authority approvals. Final dimensions and services will be stated in your sales and purchase agreement 2. All room dimensions are measured to structural elements and exclude wall finishes and construction tolerances. 3. All dimensions have been provided by our consultant architects. 4. All materials, dimensions and drawings are approximate. Information is subject to change without notice. 5. Actual suite area may vary from the stated area. Drawings are not to scale. The Developer reserves the right to make any revisions whatsoever including for aesthetic purposes. 6. Calculation of suite area is measured as the area bounded by the centre line of demising or partition walls separating one unit from another unit, the exterior face of all exterior walls, and the exterior face of the corridor wall enclosing the adjoining unit. 7. Calculation of balcony area is measured as the area bounded by the centre line of demising or partition walls separating one unit from another unit, the outmost face of the enclosing guard and the external face of the adjoining balcony. 8. The units are measured at typical floor in the building. Columns may vary in size depending on the floor level. 9. For each unit type, unit sizes and details might be different and your sales and purchase agreement will contain the actual size of each specific unit.

One Bedroom

TYPE 3



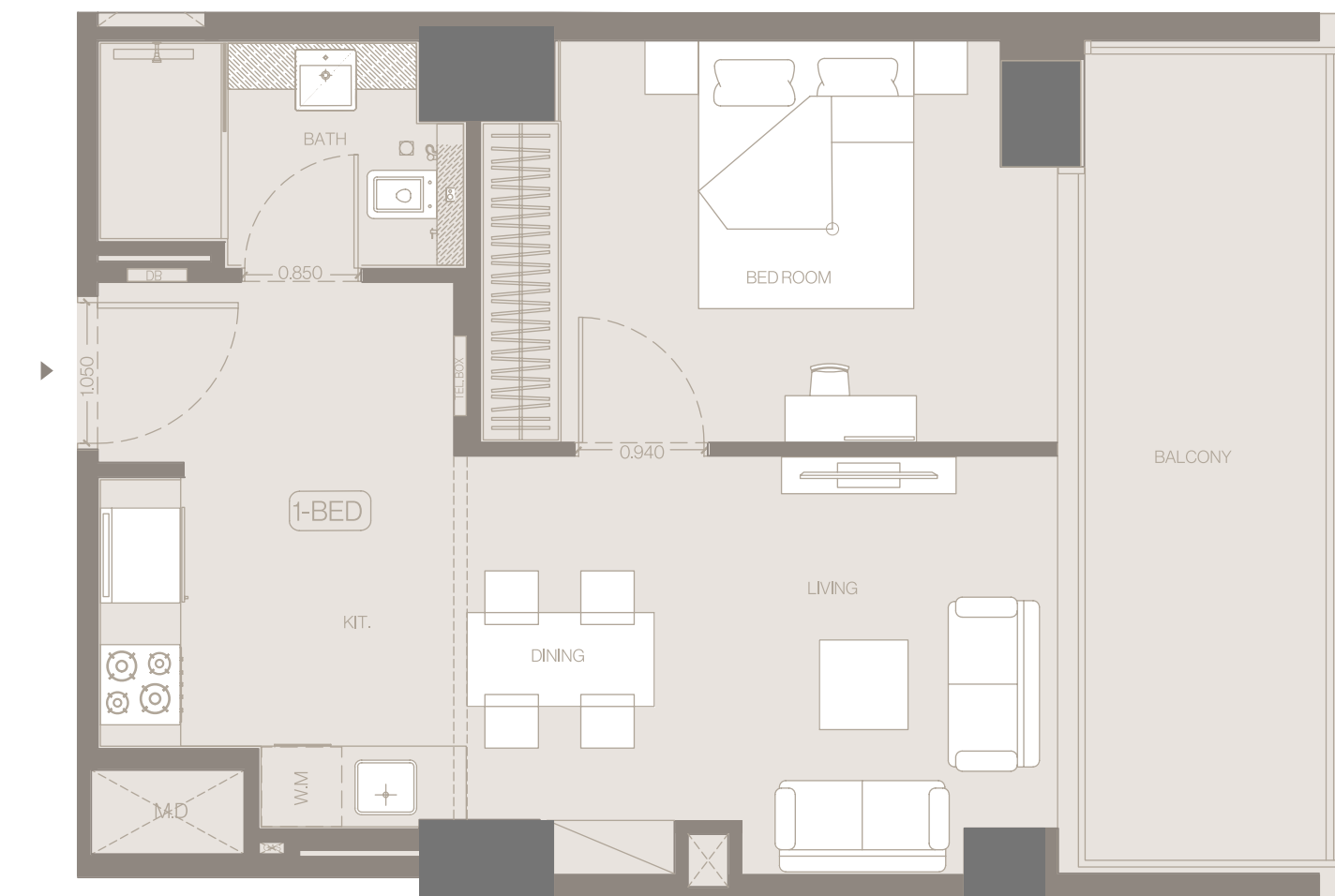
2ND - 9TH FLOOR PLAN

FLAT NO.: 8

AREA	SQ.M.	SQ.FT.
Suite Area	45.79 m ²	492.88 ft ²
Balcony Area	12.51 m ²	134.66 ft ²
Total Unit Area	58.30 m ²	627.54 ft ²

FLAT DESIGN COMPONENTS

Bath	4 m ²
Bedroom	12 m ²
Laundry	1 m ²
Kitchen	7 m ²
Living & Dinning	13 m ²
Corridor	3 m ²



Disclaimer: 1. All stated dimensions and services whether in relation to the building, common areas or individual units are subject to government and local authority approvals. Final dimensions and services will be stated in your sales and purchase agreement 2. All room dimensions are measured to structural elements and exclude wall finishes and construction tolerances. 3. All dimensions have been provided by our consultant architects. 4. All materials, dimensions and drawings are approximate. Information is subject to change without notice. 5. Actual suite area may vary from the stated area. Drawings are not to scale. The Developer reserves the right to make any revisions whatsoever including for aesthetic purposes. 6. Calculation of suite area is measured as the area bounded by the centre line of demising or partition walls separating one unit from another unit, the exterior face of all exterior walls, and the exterior face of the corridor wall enclosing the adjoining unit. 7. Calculation of balcony area is measured as the area bounded by the centre line of demising or partition walls separating one unit from another unit, the outmost face of the enclosing guard and the external face of the adjoining balcony. 8. The units are measured at typical floor in the building. Columns may vary in size depending on the floor level. 9. For each unit type, unit sizes and details might be different and your sales and purchase agreement will contain the actual size of each specific unit.

One Bedroom

TYPE 4



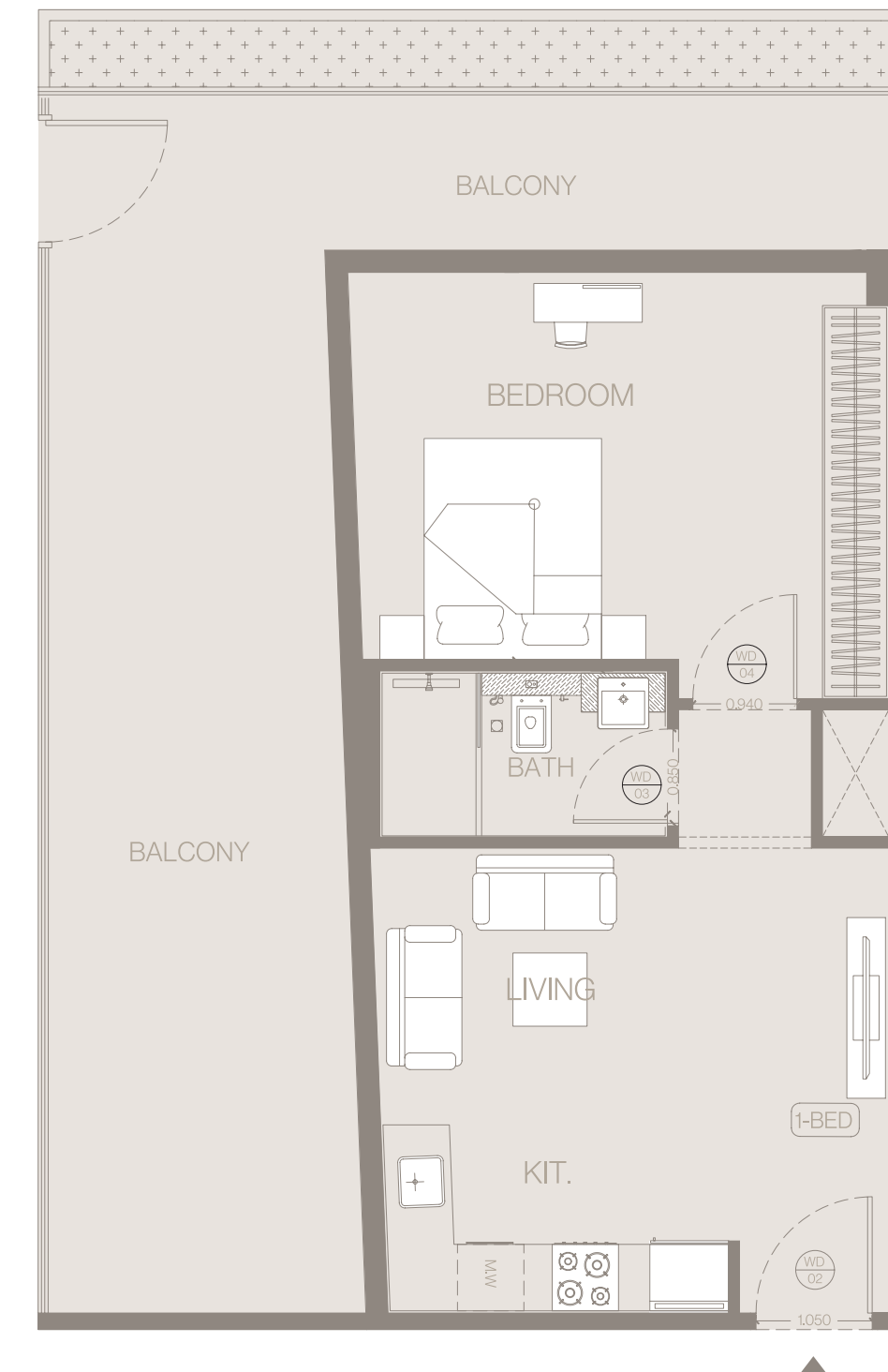
1ST FLOOR PLAN

FLAT NO.: 12

AREA	SQ.M.	SQ.FT.
Suite Area	46.71 m ²	502.78 ft ²
Balcony Area	38.18 m ²	410.75 ft ²
Total Unit Area	84.87 m ²	913.53 ft ²

FLAT DESIGN COMPONENTS

Bath	4 m ²
Bedroom	17 m ²
Kitchen	5 m ²
Living & Dinning	14 m ²
Passage	1 m ²



Disclaimer: 1. All stated dimensions and services whether in relation to the building, common areas or individual units are subject to government and local authority approvals. Final dimensions and services will be stated in your sales and purchase agreement 2. All room dimensions are measured to structural elements and exclude wall finishes and construction tolerances. 3. All dimensions have been provided by our consultant architects. 4. All materials, dimensions and drawings are approximate. Information is subject to change without notice. 5. Actual suite area may vary from the stated area. Drawings are not to scale. The Developer reserves the right to make any revisions whatsoever including for aesthetic purposes. 6. Calculation of suite area is measured as the area bounded by the centre line of demising or partition walls separating one unit from another unit, the exterior face of all exterior walls, and the exterior face of the corridor wall enclosing the adjoining unit. 7. Calculation of balcony area is measured as the area bounded by the centre line of demising or partition walls separating one unit from another unit, the outmost face of the enclosing guard and the external face of the adjoining balcony. 8. The units are measured at typical floor in the building. Columns may vary in size depending on the floor level. 9. For each unit type, unit sizes and details might be different and your sales and purchase agreement will contain the actual size of each specific unit.

One Bedroom

TYPE 5

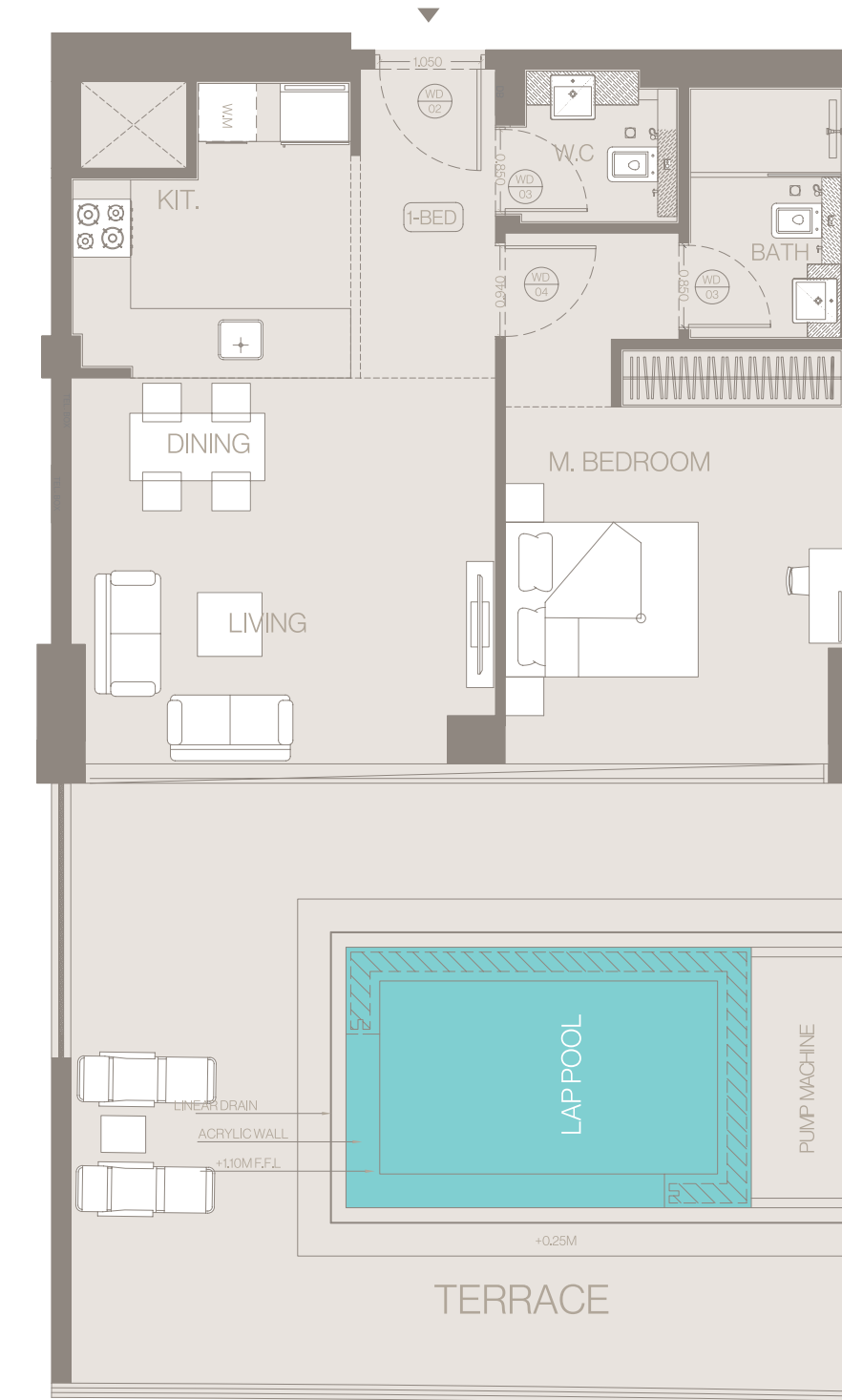
10TH FLOOR PLAN

FLAT NO.: 1

AREA	SQ.M.	SQ.FT.
Suite Area	59.34 m ²	638.73 ft ²
Balcony Area	52.06 m ²	560.37 ft ²
Total Unit Area	111.40 m ²	1199.10 ft ²

FLAT DESIGN COMPONENTS

Bath	4 m ²
Bedroom	17 m ²
Kitchen	8 m ²
Living & Dinning	17 m ²
PWDR	3 m ²
Passage	5 m ²



Disclaimer: 1. All stated dimensions and services whether in relation to the building, common areas or individual units are subject to government and local authority approvals. Final dimensions and services will be stated in your sales and purchase agreement 2. All room dimensions are measured to structural elements and exclude wall finishes and construction tolerances. 3. All dimensions have been provided by our consultant architects. 4. All materials, dimensions and drawings are approximate. Information is subject to change without notice. 5. Actual suite area may vary from the stated area. Drawings are not to scale. The Developer reserves the right to make any revisions whatsoever including for aesthetic purposes. 6. Calculation of suite area is measured as the area bounded by the centre line of demising or partition walls separating one unit from another unit, the exterior face of all exterior walls, and the exterior face of the corridor wall enclosing the adjoining unit. 7. Calculation of balcony area is measured as the area bounded by the centre line of demising or partition walls separating one unit from another unit, the outmost face of the enclosing guard and the external face of the adjoining balcony. 8. The units are measured at typical floor in the building. Columns may vary in size depending on the floor level. 9. For each unit type, unit sizes and details might be different and your sales and purchase agreement will contain the actual size of each specific unit.

One Bedroom

TYPE 6



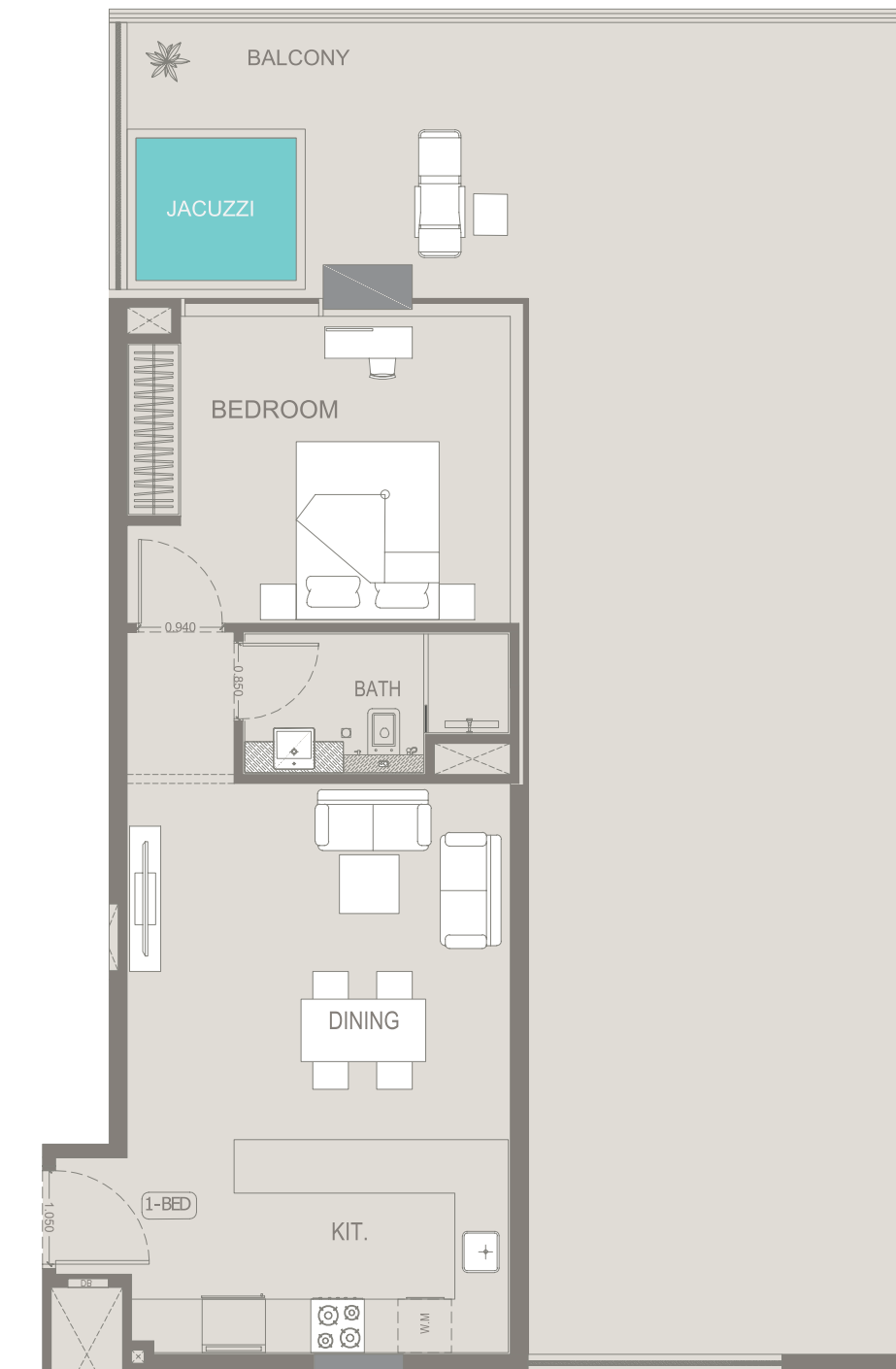
10TH FLOOR PLAN

FLAT NO.: 6

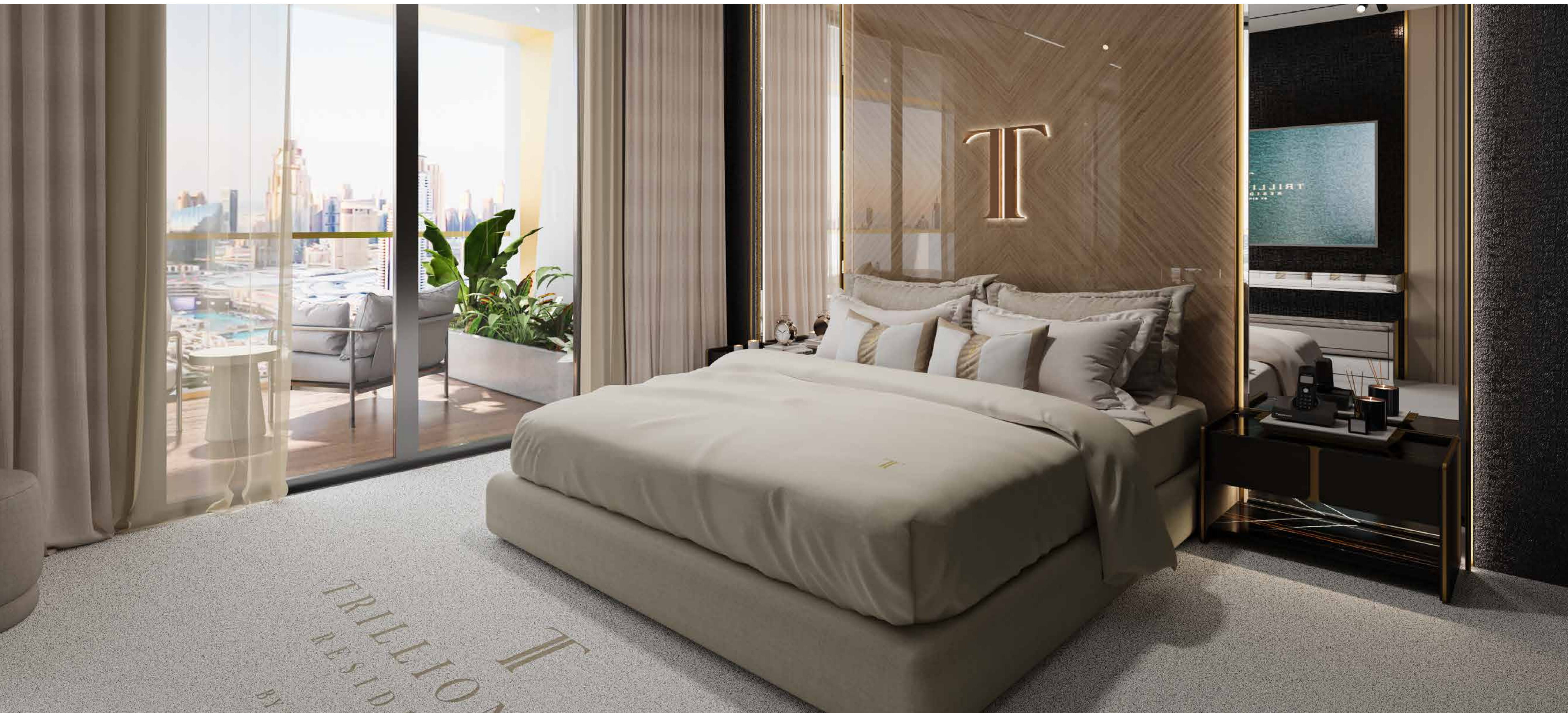
AREA	SQ.M.	SQ.FT.
Suite Area	54.80 m ²	589.86 ft ²
Balcony Area	81.61 m ²	878.44 ft ²
Total Unit Area	136.41 m ²	1468.31 ft ²

FLAT DESIGN COMPONENTS

Bath	4 m ²
Bedroom	15 m ²
Kitchen	11 m ²
Living & Dining	17 m ²
Passage	2 m ²



Disclaimer: 1. All stated dimensions and services whether in relation to the building, common areas or individual units are subject to government and local authority approvals. Final dimensions and services will be stated in your sales and purchase agreement 2. All room dimensions are measured to structural elements and exclude wall finishes and construction tolerances. 3. All dimensions have been provided by our consultant architects. 4. All materials, dimensions and drawings are approximate. Information is subject to change without notice. 5. Actual suite area may vary from the stated area. Drawings are not to scale. The Developer reserves the right to make any revisions whatsoever including for aesthetic purposes. 6. Calculation of suite area is measured as the area bounded by the centre line of demising or partition walls separating one unit from another unit, the exterior face of all exterior walls, and the exterior face of the corridor wall enclosing the adjoining unit. 7. Calculation of balcony area is measured as the area bounded by the centre line of demising or partition walls separating one unit from another unit, the outmost face of the enclosing guard and the external face of the adjoining balcony. 8. The units are measured at typical floor in the building. Columns may vary in size depending on the floor level. 9. For each unit type, unit sizes and details might be different and your sales and purchase agreement will contain the actual size of each specific unit.



TRILLION
RESID
BY

Two Bedroom

TYPE 1



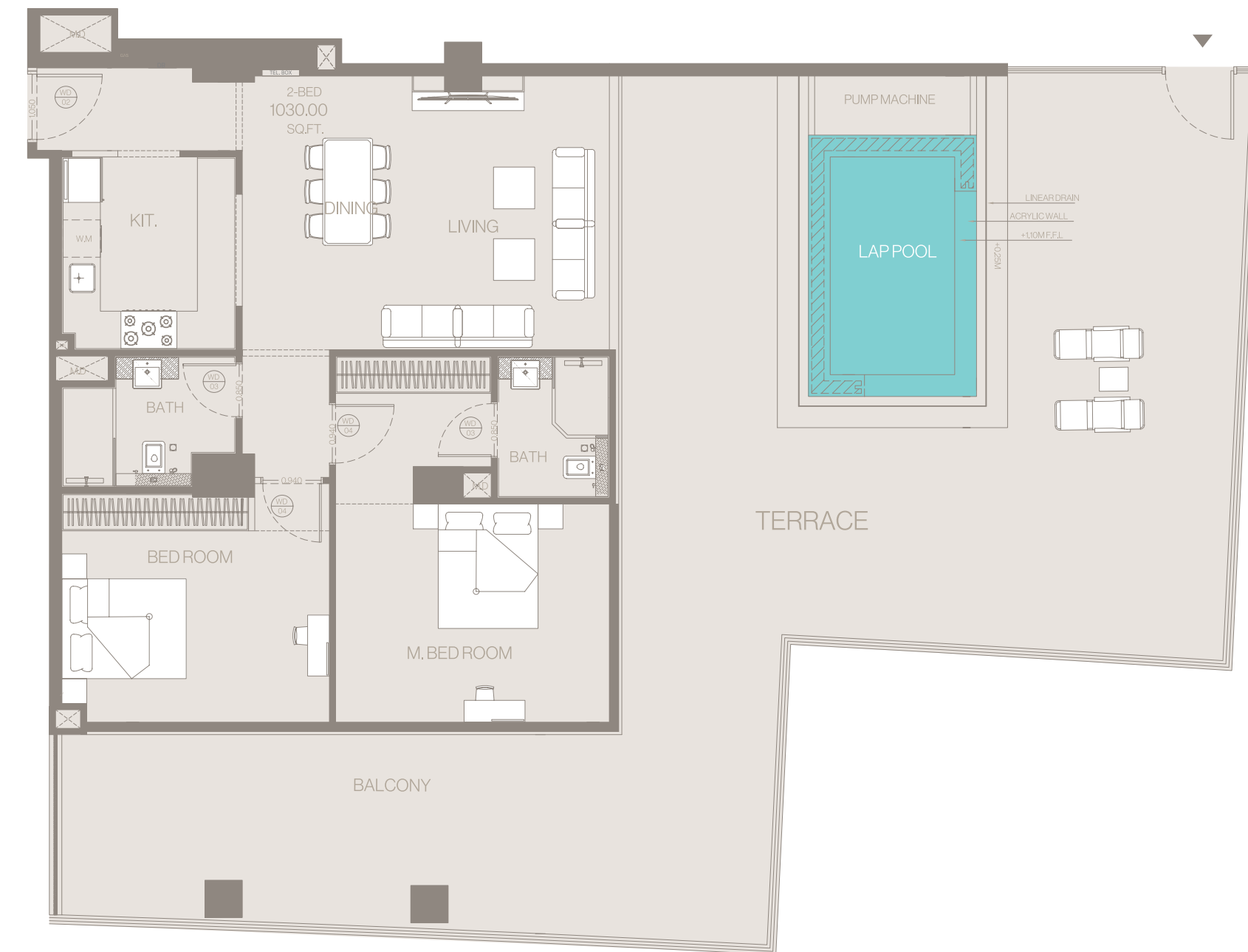
1ST FLOOR PLAN

FLAT NO.: 4

AREA	SQ.M.	SQ.FT.
Suite Area	96.64 m ²	1040.22 ft ²
Balcony Area	134.55 m ²	1448.28 ft ²
Total Unit Area	231.19 m ²	2488.51 ft ²

FLAT DESIGN COMPONENTS

Master Bathroom	4 m ²
Master Bedroom	22m ²
Bathroom	5m ²
Bedroom	15m ²
Passage	6 m ²
Kitchen	9 m ²
Living & Dining	26 m ²



Disclaimer: 1. All stated dimensions and services whether in relation to the building, common areas or individual units are subject to government and local authority approvals. Final dimensions and services will be stated in your sales and purchase agreement 2. All room dimensions are measured to structural elements and exclude wall finishes and construction tolerances. 3. All dimensions have been provided by our consultant architects. 4. All materials, dimensions and drawings are approximate. Information is subject to change without notice. 5. Actual suite area may vary from the stated area. Drawings are not to scale. The Developer reserves the right to make any revisions whatsoever including for aesthetic purposes. 6. Calculation of suite area is measured as the area bounded by the centre line of demising or partition walls separating one unit from another unit, the exterior face of all exterior walls, and the exterior face of the corridor wall enclosing the adjoining unit. 7. Calculation of balcony area is measured as the area bounded by the centre line of demising or partition walls separating one unit from another unit, the outmost face of the enclosing guard and the external face of the adjoining balcony. 8. The units are measured at typical floor in the building. Columns may vary in size depending on the floor level. 9. For each unit type, unit sizes and details might be different and your sales and purchase agreement will contain the actual size of each specific unit.

Two Bedroom

TYPE 2

2ND - 9TH FLOOR PLAN

FLAT NO.: 7

AREA	SQ.M.	SQ.FT.
Suite Area	106.91 m ²	1150.77 ft ²
Balcony Area	27.92 m ²	300.53 ft ²
Total Unit Area	134.83 m ²	1451.30 ft ²

FLAT DESIGN COMPONENTS

Master Bathroom	4 m ²
Master Bedroom	17m ²
Laundry	1 m ²
Kitchen	8 m ²
Living & Dinning	21 m ²
PWDR	3 m ²
Storage	7 m ²
Passage	15 m ²



Disclaimer: 1. All stated dimensions and services whether in relation to the building, common areas or individual units are subject to government and local authority approvals. Final dimensions and services will be stated in your sales and purchase agreement 2. All room dimensions are measured to structural elements and exclude wall finishes and construction tolerances. 3. All dimensions have been provided by our consultant architects. 4. All materials, dimensions and drawings are approximate. Information is subject to change without notice. 5. Actual suite area may vary from the stated area. Drawings are not to scale. The Developer reserves the right to make any revisions whatsoever including for aesthetic purposes. 6. Calculation of suite area is measured as the area bounded by the centre line of demising or partition walls separating one unit from another unit, the exterior face of all exterior walls, and the exterior face of the corridor wall enclosing the adjoining unit. 7. Calculation of balcony area is measured as the area bounded by the centre line of demising or partition walls separating one unit from another unit, the outmost face of the enclosing guard and the external face of the adjoining balcony. 8. The units are measured at typical floor in the building. Columns may vary in size depending on the floor level. 9. For each unit type, unit sizes and details might be different and your sales and purchase agreement will contain the actual size of each specific unit.

Two Bedroom

TYPE 3

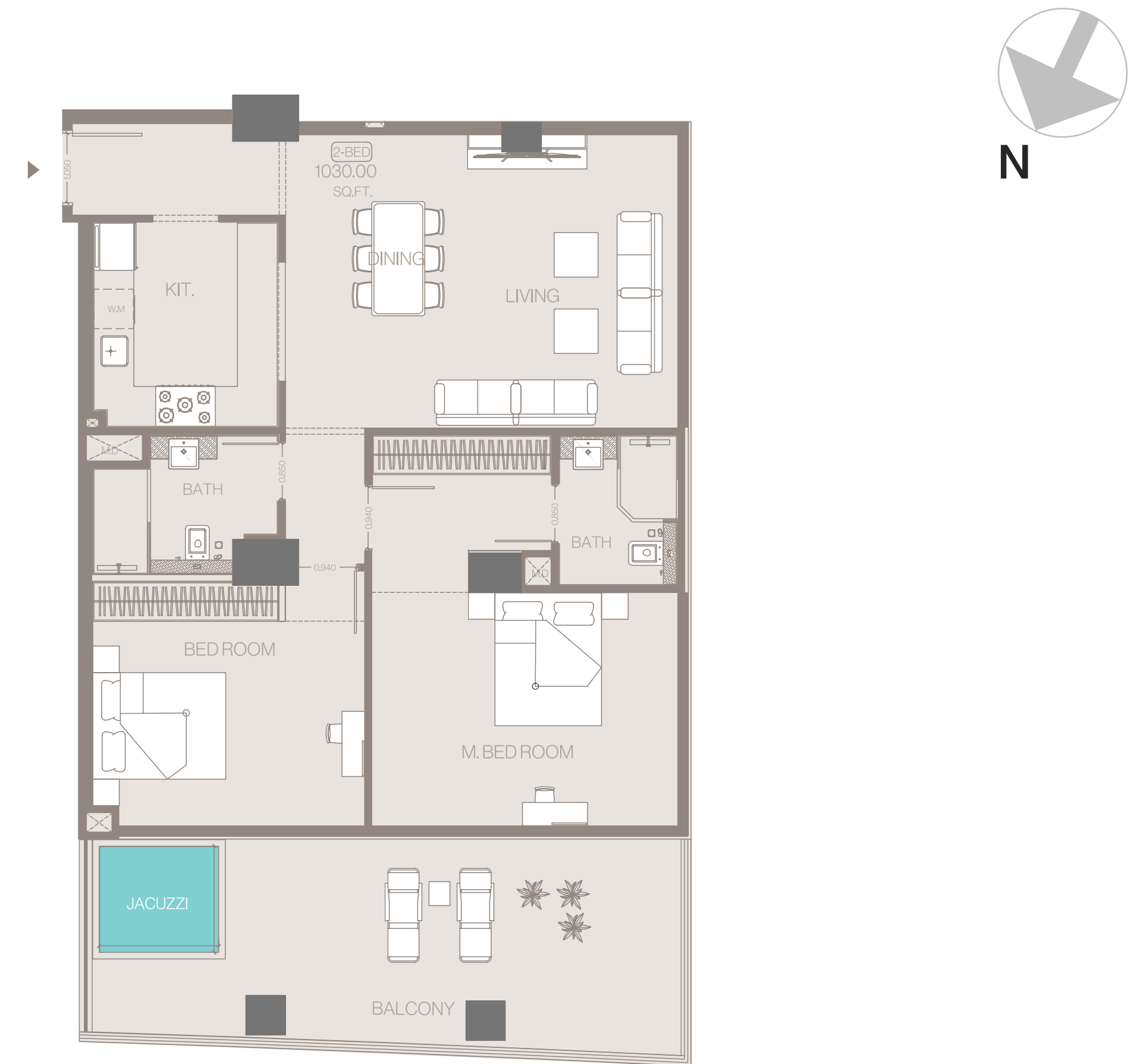
2ND - 9TH FLOOR PLAN

FLAT NO.: 9

AREA	SQ.M.	SQ.FT.
Suite Area	96.51 m ²	1038.82 ft ²
Balcony Area	28.56 m ²	307.42 ft ²
Total Unit Area	125.07 m ²	1346.24 ft ²

FLAT DESIGN COMPONENTS

Master Bathroom	4 m ²
Master Bedroom	22m ²
Bathroom	5m ²
Bedroom	15m ²
Passage	6 m ²
Kitchen	9 m ²
Living & Dinning	26 m ²



Disclaimer: 1. All stated dimensions and services whether in relation to the building, common areas or individual units are subject to government and local authority approvals. Final dimensions and services will be stated in your sales and purchase agreement 2. All room dimensions are measured to structural elements and exclude wall finishes and construction tolerances. 3. All dimensions have been provided by our consultant architects. 4. All materials, dimensions and drawings are approximate. Information is subject to change without notice. 5. Actual suite area may vary from the stated area. Drawings are not to scale. The Developer reserves the right to make any revisions whatsoever including for aesthetic purposes. 6. Calculation of suite area is measured as the area bounded by the centre line of demising or partition walls separating one unit from another unit, the exterior face of all exterior walls, and the exterior face of the corridor wall enclosing the adjoining unit. 7. Calculation of balcony area is measured as the area bounded by the centre line of demising or partition walls separating one unit from another unit, the outmost face of the enclosing guard and the external face of the adjoining balcony. 8. The units are measured at typical floor in the building. Columns may vary in size depending on the floor level. 9. For each unit type, unit sizes and details might be different and your sales and purchase agreement will contain the actual size of each specific unit.

Two Bedroom

TYPE 4

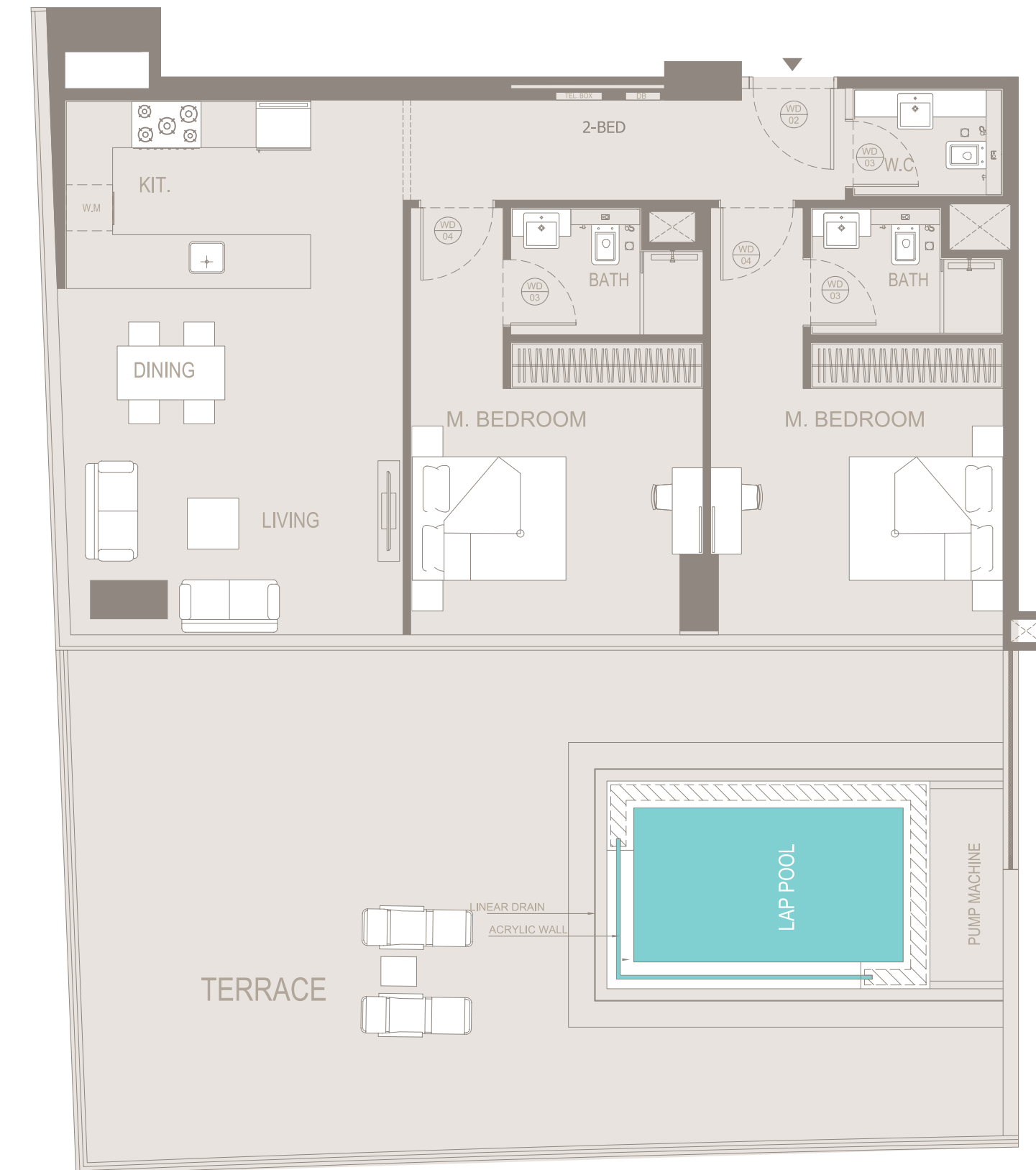
10TH FLOOR PLAN

FLAT NO.: 17

AREA	SQ.M.	SQ.FT.
Suite Area	90.23 m ²	971.23 ft ²
Balcony Area	80.17 m ²	862.94 ft ²
Total Unit Area	170.40 m ²	1834.17 ft ²

FLAT DESIGN COMPONENTS

Master Bathroom	4 m ²
Master Bedroom	16 m ²
Bathroom	4 m ²
Bedroom	16 m ²
Kitchen	8 m ²
Living & Dinning	23 m ²
PWDR	3 m ²
Passage	8 m ²



Disclaimer: 1. All stated dimensions and services whether in relation to the building, common areas or individual units are subject to government and local authority approvals. Final dimensions and services will be stated in your sales and purchase agreement 2. All room dimensions are measured to structural elements and exclude wall finishes and construction tolerances. 3. All dimensions have been provided by our consultant architects. 4. All materials, dimensions and drawings are approximate. Information is subject to change without notice. 5. Actual suite area may vary from the stated area. Drawings are not to scale. The Developer reserves the right to make any revisions whatsoever including for aesthetic purposes. 6. Calculation of suite area is measured as the area bounded by the centre line of demising or partition walls separating one unit from another unit, the exterior face of all exterior walls, and the exterior face of the corridor wall enclosing the adjoining unit. 7. Calculation of balcony area is measured as the area bounded by the centre line of demising or partition walls separating one unit from another unit, the outmost face of the enclosing guard and the external face of the adjoining balcony. 8. The units are measured at typical floor in the building. Columns may vary in size depending on the floor level. 9. For each unit type, unit sizes and details might be different and your sales and purchase agreement will contain the actual size of each specific unit.

Two Bedroom

TYPE 5

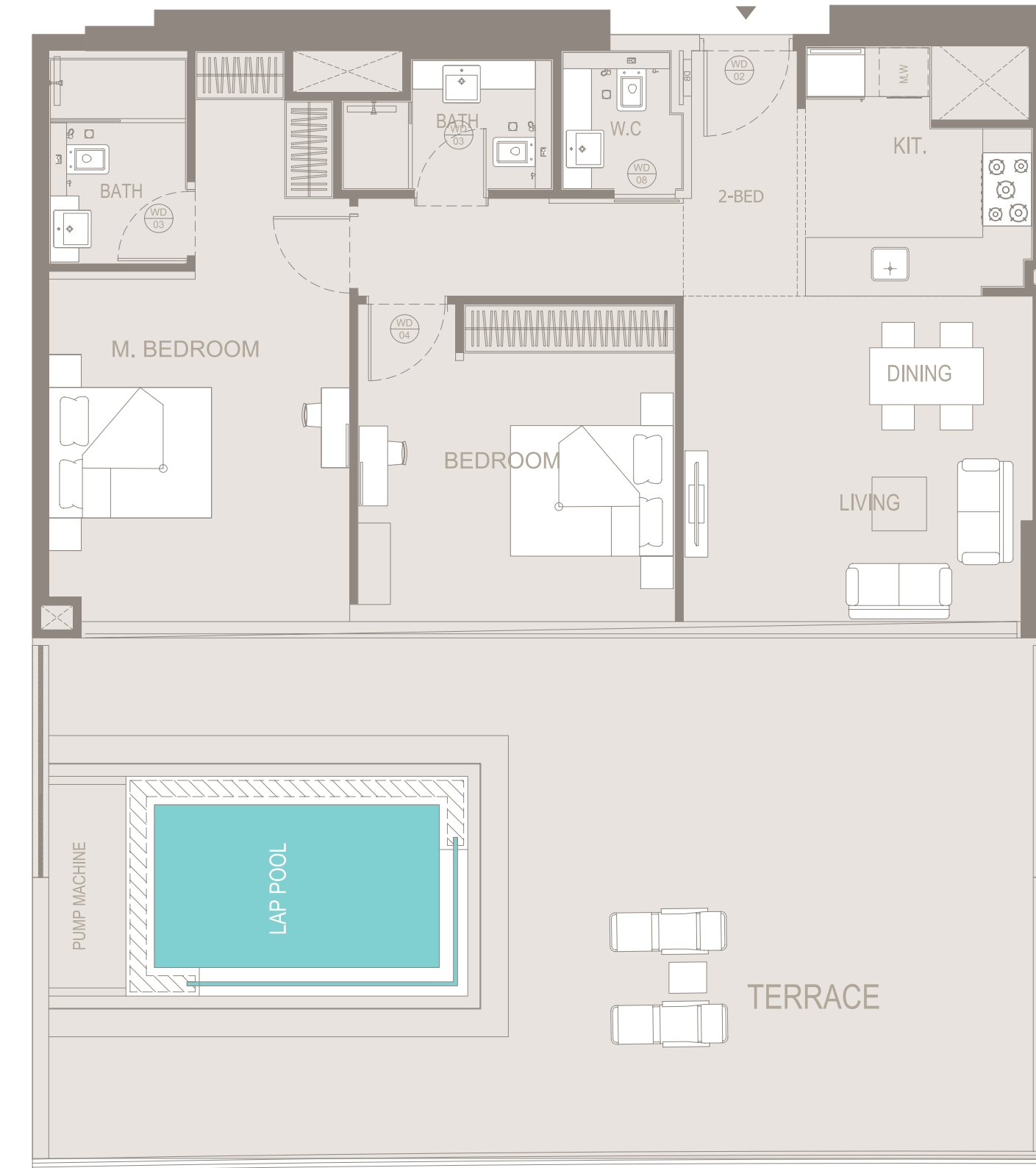
10TH FLOOR PLAN

FLAT NO.: 9

AREA	SQ.M.	SQ.FT.
Suite Area	88.09 m ²	948.18 ft ²
Balcony Area	78 m ²	839.59 ft ²
Total Unit Area	166.09 m ²	1787.78 ft ²

FLAT DESIGN COMPONENTS

Master Bathroom	5 m ²
Master Bedroom	20 m ²
Bathroom	4 m ²
Bedroom	15 m ²
Kitchen	7 m ²
Living & Dinning	17 m ²
PWDR	3 m ²
Passage	3 m ²



Disclaimer: 1. All stated dimensions and services whether in relation to the building, common areas or individual units are subject to government and local authority approvals. Final dimensions and services will be stated in your sales and purchase agreement 2. All room dimensions are measured to structural elements and exclude wall finishes and construction tolerances. 3. All dimensions have been provided by our consultant architects. 4. All materials, dimensions and drawings are approximate. Information is subject to change without notice. 5. Actual suite area may vary from the stated area. Drawings are not to scale. The Developer reserves the right to make any revisions whatsoever including for aesthetic purposes. 6. Calculation of suite area is measured as the area bounded by the centre line of demising or partition walls separating one unit from another unit, the exterior face of all exterior walls, and the exterior face of the corridor wall enclosing the adjoining unit. 7. Calculation of balcony area is measured as the area bounded by the centre line of demising or partition walls separating one unit from another unit, the outmost face of the enclosing guard and the external face of the adjoining balcony. 8. The units are measured at typical floor in the building. Columns may vary in size depending on the floor level. 9. For each unit type, unit sizes and details might be different and your sales and purchase agreement will contain the actual size of each specific unit.

Two Bedroom

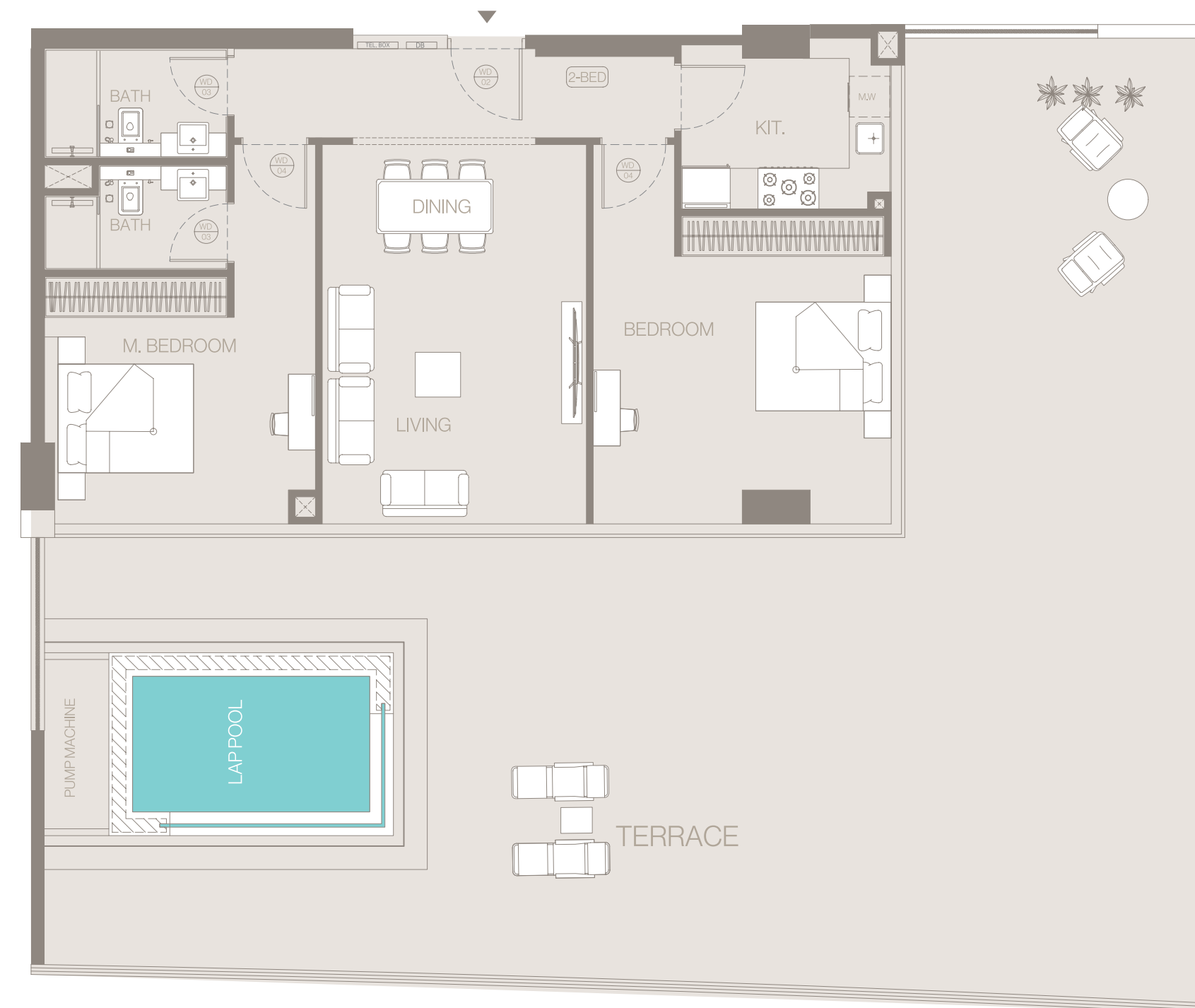
TYPE 6

10TH FLOOR PLAN FLAT NO.: 8

AREA	SQ.M.	SQ.FT.
Suite Area	92.35 m ²	994.05 ft ²
Balcony Area	147.55 m ²	1588.21 ft ²
Total Unit Area	239.90 m ²	2582.26 ft ²

FLAT DESIGN COMPONENTS

Master Bathroom	4 m ²
Master Bedroom	16 m ²
Bathroom	4 m ²
Bedroom	21 m ²
Kitchen	7 m ²
Living & Dinning	22 m ²
Passage	9 m ²



Disclaimer: 1. All stated dimensions and services whether in relation to the building, common areas or individual units are subject to government and local authority approvals. Final dimensions and services will be stated in your sales and purchase agreement 2. All room dimensions are measured to structural elements and exclude wall finishes and construction tolerances. 3. All dimensions have been provided by our consultant architects. 4. All materials, dimensions and drawings are approximate. Information is subject to change without notice. 5. Actual suite area may vary from the stated area. Drawings are not to scale. The Developer reserves the right to make any revisions whatsoever including for aesthetic purposes. 6. Calculation of suite area is measured as the area bounded by the centre line of demising or partition walls separating one unit from another unit, the exterior face of all exterior walls, and the exterior face of the corridor wall enclosing the adjoining unit. 7. Calculation of balcony area is measured as the area bounded by the centre line of demising or partition walls separating one unit from another unit, the outmost face of the enclosing guard and the external face of the adjoining balcony. 8. The units are measured at typical floor in the building. Columns may vary in size depending on the floor level. 9. For each unit type, unit sizes and details might be different and your sales and purchase agreement will contain the actual size of each specific unit.